



Ragle Dental Laboratory, Inc.

Quality Firstsince 1979

On the Fly.....



Is the Cadent iTero™ Recession Proof?...

by Nick Ragle

...Dental offices are down across the country and as a result Dental labs are as well. The majority of labs around the country are down in sales, some more than others, however being 10% down or better is considered good for the current market. Ragle Dental Laboratory isn't really any different from any other lab fighting the current economic situation, except for one thing: the Cadent iTero™ dentist. [Click here](#) to read the full article.



Nat's Corner

Change in Scheduling a Crown Fit to an Existing Partial

Due to the process changes that Ragle Dental Laboratory has found necessary to become a more efficient laboratory, we are now requesting that we have your patient's partial from the start to the completion of the case. If your patient is more comfortable with keeping their partial and not being without it, we just request a Blu-Mousse impression be taken of the area of the partial (clasp and/or rest) around the prepared tooth needing replicated.

May 2009

Newsletter Spotlight



[Click here](#) to find out how to receive a **15% rebate** on a 6 unit all-ceramic veneer/crown case.

Registration has been extended! Make sure you sign up by:

Wednesday, May 20, 5 PM

You can find on our website, www.raglelab.com, a presentation called; "[Resin Clasp Technique](#)," explaining a step by step process in taking a Blu-Mousse impression of a partial to fit a new crown. By taking a Blu-Mousse impression we are getting an accurate representation of the patient's partial without inconveniencing your patient. If you have any questions on this procedure or would like more instruction on the Blu-Mousse impression technique, please feel free to contact Nick Ragle anytime M-Th, by either emailing him at nrragle@raglelab.com or by phone at (217) 398-0090.

Attention Please!!

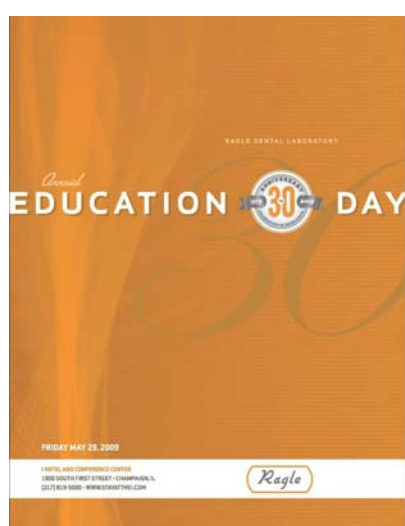
I would like to make a friendly request; I have noticed the past few months that some cases are being sent into the lab in a less that desirable condition. If you could ensure that all debris, food, adhesive, and blood have been completely removed from cases, especially denture cases, I and my staff would be greatly appreciative.

Additionally, please remember to remove any cotton rolls/wedges from impressions that are sent in.

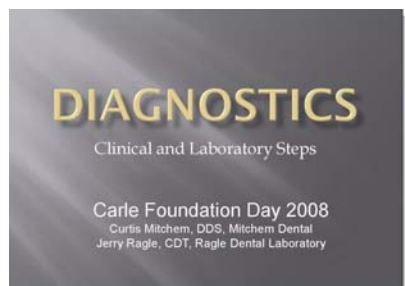
Ragle Opens First U.S. Milling Center for Cadent, Inc.



Jerry Ragle has thought so much of Cadent and its digital impression scanner, iTero™, that when the opportunity came to mill the models he jumped at the chance. *"There is a tremendous future for anyone who wants it"* said Jerry on a recent [WDWS talk show](#) hosted by Alex Ruggieri. They



Download a copy of the brochure or register online for the 30th Anniversary Education Day.



View a copy of the presentation made by Curtis Mitchem, DDS and Jerry Ragle, CDT at the 2008 Carle Foundation Day.

And the most annoying thing patients do while in the dentists' chair...

ANSWERING CELL PHONES!!

systems.



View or Print the 2009 Ragle Event Calendar.

[Unsubscribe jragle@raglelab.com](mailto:jragle@raglelab.com) from this list.

Our mailing address is:
Ragle Dental Laboratory, Inc.
301 South First Street
Champaign, Illinois 61820

Our telephone:
(217) 398-0090
(800) 742-3629 Toll Free
(217) 398-8098 Fax

Copyright (C) 2009 Ragle Dental Laboratory, Inc All rights reserved.

[Forward](#) this email to a friend
[Update your profile](#)